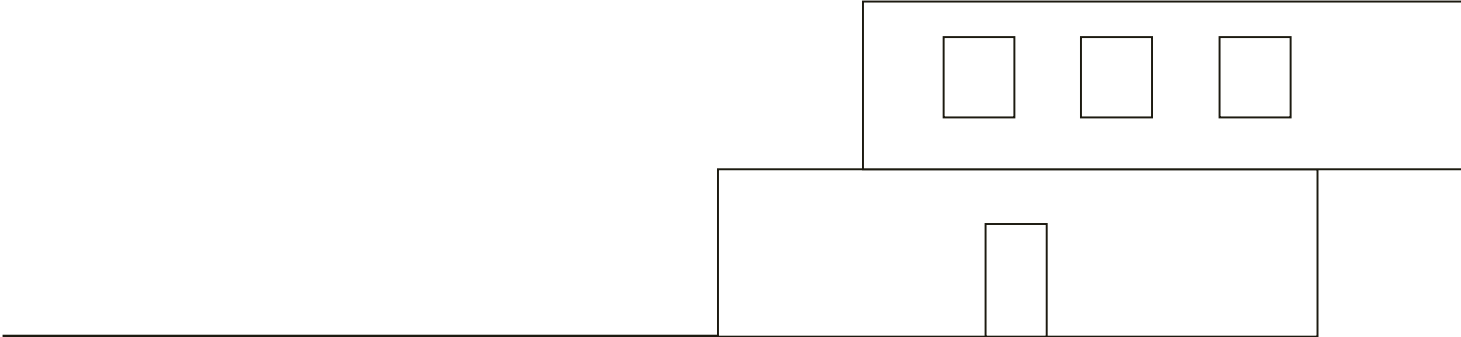


do not distribute



**P.O.D.** \_\_\_\_\_

Private Ofgid Development brochure #2018



do not distribute

## **P.O.D. - Private Of-Grid Development**

### **Overview**

P.O.D.'s system solution is a modern approach to Housing growing market demands. The concept is base on accessibility & transportability. Accessible in pricing and timing of manufacturing/delivery, and transportability is in its design concept. A set of foldable/retractable panels volumes contain within the container space and creating the surrounding walls and interior separation of the habitat when unfolded. When folded the floors form a transportable industrial standard container. P.O.D. or Private Ofgrid Development, propose a niche service to the Housing market. It can supply all types of demands in the prefabricated Housing segment worldwide, thanks to the special attention given to the technical parts of the panel's volume. The concept came to fruition following a reflection on movable/modulable habitat, and taking in consideration existing workforce and logistic capacity.

100m2 of transportable, modifiable, sustainable and habitable functional living space made possible by the concept design applied and the building functions of each panels. Materials for main frame can be sourced worldwide and interior composition can be selected by clients at order. Distribution takes place along the existing Housing market services and selected regional Architects.

The number of people, worldwide, living in slums environments grew from 700 million in 1990 to 880 million in 2014 over passing 900 million in 2018, and will expand further. In Africa, India, South America and China, a quarter of the population live in slums environments.

Adaptability to environments is a must in today Housing development. Prefabricated account for 10 to 30% of Housing market from Europe to Japan. Japan remain the leader in prefabricated demand, India and Africa growth demands lead short term market demands and the U.S.A. the high end market demand. A segmented market in needs of more adaptable solution, P.O.D. provide with a reliable solution for any Lifestyle, or professional use and is adaptable to all terrain and environments types.



do not distribute

## Housing worldwide

### Ongoing demands

The Housing prices worldwide is increasing, and more affordable solution must be considered.

Demand by Segmented market/ by n0 of people/

- slum 900m - remote suburb 600m - off grid 190m -

As per 2020 the demands will pass 2 billion Human in need of Housing. The P.O.D. concept is suitable for answering a portion of the ongoing market demand.

**Real House Prices over the Past Year**

Real house prices increased over the past year in most countries. (2017:Q3 or latest, annual percent change)

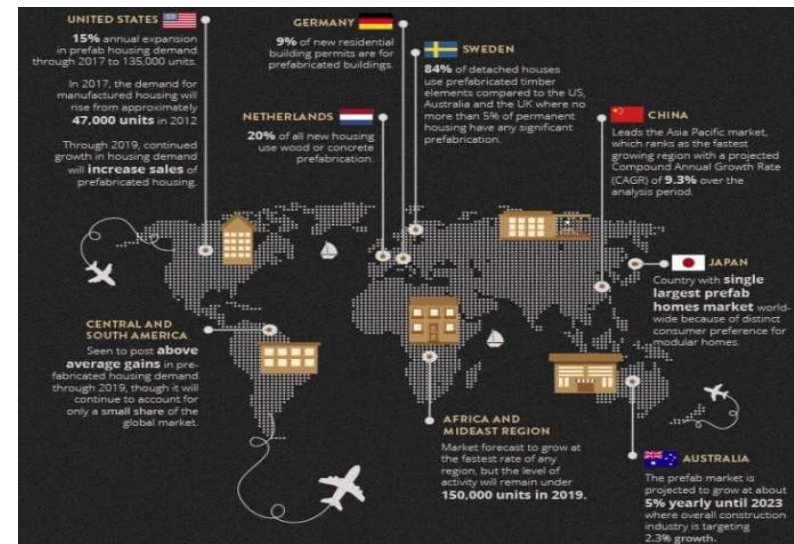


Source: Bank for International Settlements, European Central Bank, Federal Reserve Bank of Dallas, Savills, Sinyi Real Estate Planning and Research, and national sources.

### Prefab market

Infographic data's show a steady demands in prefabricated housing. This information needs understanding. It means that social norms have now better accepted the prefabricated solution, a growing interest worldwide. Furthermore, all studies lays out how demography and policies have worsened conditions and inflated Housing crisis. From Public housing, home-ownership, land use policies and ever rising prices, the world needs houses and Housing needs to be adaptable to time and circumstances.

*“More than 330 million households in the world suffer from a lack of secure, adequate and affordable housing, a figure that will grow by 30 percent to 440 million households by 2025.”source – WRI -*





do not distribute

### Concept design

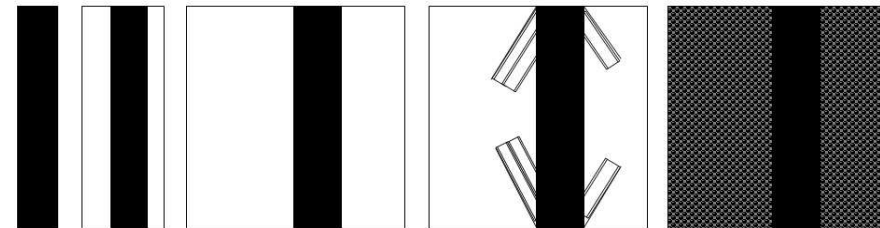
The specificities in the design are the facility to change panels to adapt to usage where needed, as well as an easy replacement when damaged. The concept was largely developed keeping in mind the transportable necessity hence the use of panel's volume allowing use of space in multiple ways.



### Workforce

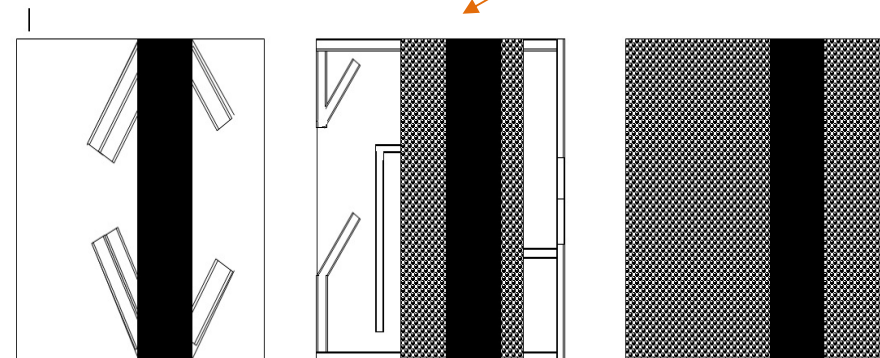
The manufacturing of P.O.D.'s elements requires the general contractor package in workforce. Carpenters, Electricians, Plumber, Estimators, Managers, general outlook designers and can be set indoors.

The sales and market development are the points to address with a lead team in each franchise. These individuals have to be identified.



### Materials

At the exception of concrete, any material can be use to dress the main frame. The main frame consists of nesting the central functions of the habitation, water filters, batteries, etc, as well as the strength infra structure. Use of hemp and other organic materials offer the best viability.



### Technicalities

P.O.D. HQ unit price of 120k\$ for a 100m2 of livable space comprise a solar roof to batteries, Water filter and Biogas system.



do not distribute

## **Logistic**

### One fit all

When folded, P.O.D.'s become transportable following the industrial container standards (all sizes) allowing for transcontinental transport. The main logistical element being addressed, the concept allow for remote and Ofgrid location solution, therefore the key elements stand in purpose design and living environments needs. One infrastructure fits all and it is in the functional designs and local weather type that clients find their individual solutions. P.O.D.'s overall design was intended to suits the international logistic standard offering a delivering capacity anywhere on Earth.

### Service

The program involve a servicing solution including, P.O.D. management, Ofgrid location/relocation, P.O.D.'s share, as well as emergency and relieve demands.

Following 5 years of development the program enter into prototyping stage and requires funding. Any interested parties please contact the HOB at [homeofbohemian@gmail.com](mailto:homeofbohemian@gmail.com)

Thank You for Your attention.